

Quantum Edge MT4 Starter Guide

Empowering Your Trades – Like xAI Revolutionizing AI, QE Transforms Trading 🚀

Welcome to Trading with Quantum Edge

Hey future trader! Diving into FX (like EUR/USD) or crypto (Bitcoin volatility)? This guide launches you into MetaTrader 4 (MT4) – the platform powering millions of trades. Quantum Edge is your Grok-like EA: smart confirmation, automation, and confidence booster. No experience? Blast off – from basics to Bitcoin wins.



MT4 Platform

Free from brokers (IC Markets, Pepperstone, etc.)
Available for Windows & Mac (Desktop only)



Forex Focus

Major pairs: EUR/USD, GBP/USD, USD/JPY
Minor & exotic pairs available



Crypto Trading

Bitcoin (BTCUSD), Ethereum, major altcoins
24/7 market access



QE Mission

Confirm trades with advanced algorithms
Avoid FOMO and emotional trading

1

Download & Install MT4

Recommended Broker: IC Markets (Excellent for both Forex and Crypto, fast



Fig 1.1: Professional Trading Platform Interface

A. Desktop Installation Only:

Windows Desktop

Download from broker's website or
metaquotes.com

System Requirements: Windows 7+,
2GB RAM, 1GB free space

Mac Desktop

Download from App Store or via Wine
wrapper

Note: Requires Wine/Crossover for
full functionality

B. Installation Steps:

```
# Windows/Mac Installation 1. Run the downloaded MT4 installer
2. Accept license agreement 3. Choose installation folder
(default recommended) 4. Select "Demo" server for practice 5.
Launch MT4 # First Time Setup - Create new demo account -
Balance: Start with $10,000 virtual - Leverage: 1:100 (standard)
- Server: Select "Demo" or your broker's demo
```

! Important: Always start with a DEMO account. Practice for at least 2 weeks before considering real money. Quantum Edge requires desktop MT4 only.

₿ Crypto Tip: After installation, search "BTCUSD" in Market Watch. Right-click → "Show Symbol" to trade Bitcoin like stocks.

2

Set Up Your First Trading Chart

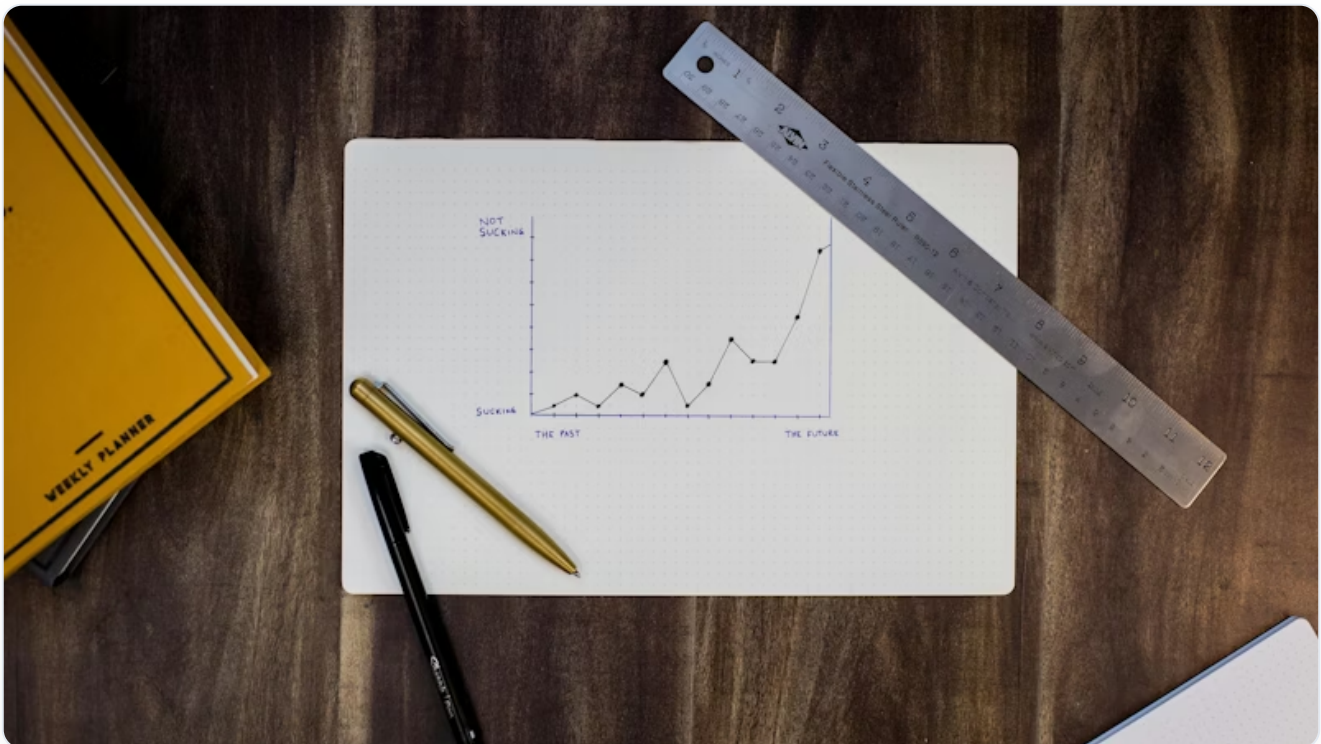


Fig 2.1: Professional BTCUSD Chart with Candlesticks and Indicators

A. Launch Your Chart:

1. Open "Market Watch" (Ctrl+M if not visible) 2. Right-click → "Show All" to see all symbols 3. Find "BTCUSD" or "EURUSD" 4. Drag & drop onto chart area

B. Customize Your Workspace:

⚡ Crypto Settings (BTCUSD)

Timeframe: M15 or H1 for active trading

Indicators: RSI (14), Bollinger Bands (20,2)

Chart Type: Candlestick or Heiken Ashi

💵 Forex Settings (EURUSD)

Timeframe: H1 or H4 for swing trading


Indicators: MACD, Moving Average (50,200)

Chart Type: Candlestick




Fig 2.2: Trading Indicators - RSI, MACD, Moving Averages

```
# Adding Indicators: 1. Click "Insert" → "Indicators" 2. Choose  
"Oscillators" → "RSI" (Relative Strength Index) 3. Set Period:  
14 4. Levels: 30 (oversold), 70 (overbought) 5. Click OK # Theme  
Settings: - Right-click chart → "Properties" - Background: Black  
(easier on eyes) - Grid: Light gray - Candles: Green/Red or  
custom colors
```

 **Practice First:** Place 5-10 demo trades. Focus on understanding entry/exit points. Watch how price reacts to your indicators.

3

Install Quantum Edge Expert Advisor

 **Security First:** Only download Quantum Edge from quantumedge.us. Never trust .ex4 files from forums or unknown sources. Desktop MT4 required.

A. Download & Prepare:

```
# Download Location: 1. Visit: quantumedge.us/download 2. Enter your license key (emailed after purchase) 3. Download: QuantumEdge_v2.1.ex4 (~1.4MB) # File Verification: - File size should be exactly 1,458,236 bytes - Download date should be recent - Scan with antivirus (should be clean)
```



Fig 3.1: File Installation - Copy QuantumEdge.ex4 to MQL4/Experts folder

B. MT4 Integration:

```
# Windows Installation: 1. In MT4: Click "File" → "Open Data Folder" 2. Navigate to: MQL4 → Experts 3. Copy "QuantumEdge.ex4" into this folder 4. Close MT4 completely 5. Restart MT4 # Mac Installation (via Wine): 1. Same folder path applies 2. May need to use "Show Package Contents" 3. Path: Applications → MetaTrader 4 → Contents → Resources → drive_c → Program Files → etc.
```

C. Activation & Configuration:

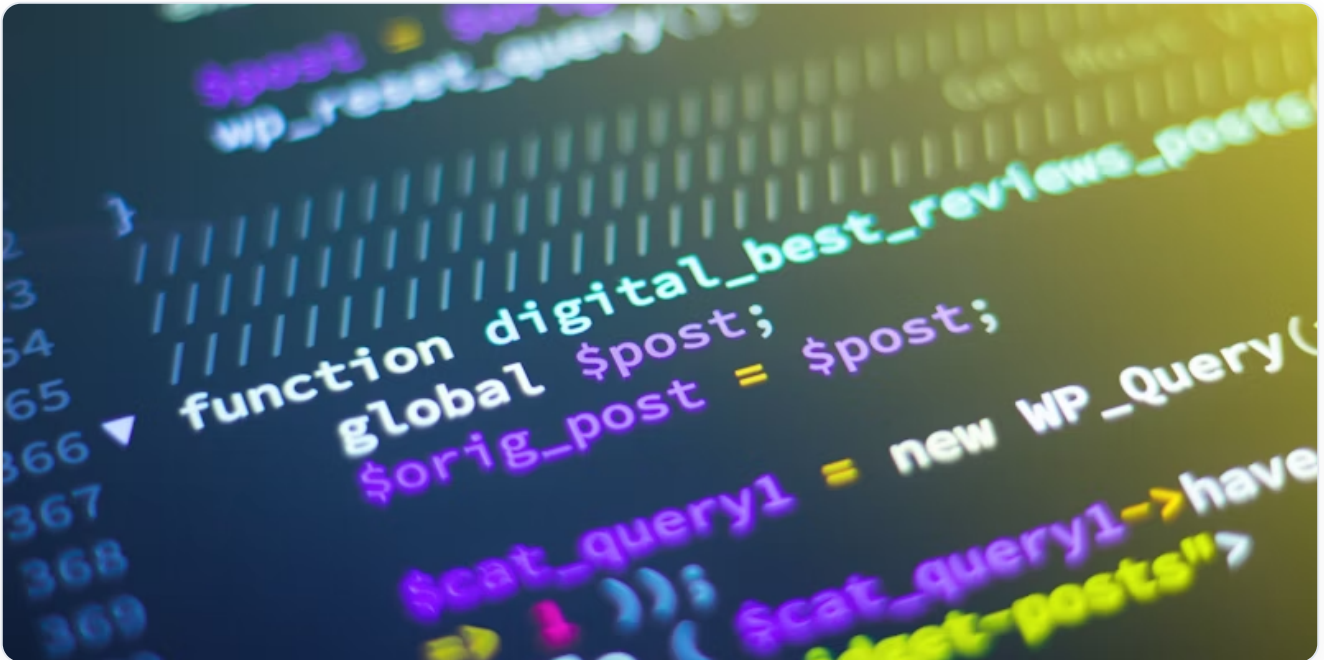


Fig 3.2: Quantum Edge Configuration Settings Panel

```
1. After restart, find "Quantum Edge" in Navigator (Ctrl+N) 2. Drag Quantum Edge onto your chart 3. Configuration window appears: # Essential Settings: ☒ Allow DLL Imports: YES ☒ Allow Automated Trading: YES (for auto-execution) ☒ Enable Alerts: YES Magic Number: 2024 (unique ID for tracking) Risk per Trade: 1.0 (1% of balance) Stop Loss: 50 pips (adjust based on strategy) Take Profit: 100 pips (2:1 risk/reward) # Signal Parameters (Defaults): - RSI Threshold: >55 for buy, <45 for sell - MACD: Cross confirmation required - Volume Filter: Enabled - Time Filter: Active during high-volatility hours
```


🔧 **Test Thoroughly:** Run Quantum Edge on DEMO for minimum 100 trades before going live. Check performance report (Journal tab).

4

Quantum Edge Trading Strategies



Fig 4.1: Buy/Sell Signals on Trading Chart with Profit Zones

How Quantum Edge Confirms Trades:

Quantum Edge scans multiple conditions simultaneously: 1. RSI Momentum (Overbought/Oversold) 2. MACD Trend Direction 3. Moving Average Alignment 4. Volume Spike Detection 5. Support/Resistance Levels 6. Time-based Market Conditions # Confirmation Logic: ALL conditions must align for "Confirmed Signal" If 4/6 conditions align: "Strong Signal" If 3/6 conditions align: "Watch Only"

Forex Strategy: EUR/USD Trend

Following

Setup: H4 Chart, London/New York Session Overlap

QE Confirmation:

- Price above 50 & 200 MA
- RSI between 45-70 (not overbought)
- MACD histogram positive
- Volume increasing on pullbacks

Action: BUY on QE green arrow

Risk: SL below recent swing low

Crypto Strategy: Bitcoin Breakout Trading

Setup: H1 Chart, High Volatility Periods

QE Confirmation:

- Price consolidating in tight range
- Volume building before breakout
- RSI neutral (40-60) before move
- Multiple timeframe alignment

Action: Enter on QE arrow + volume spike

Risk: SL other side of consolidation

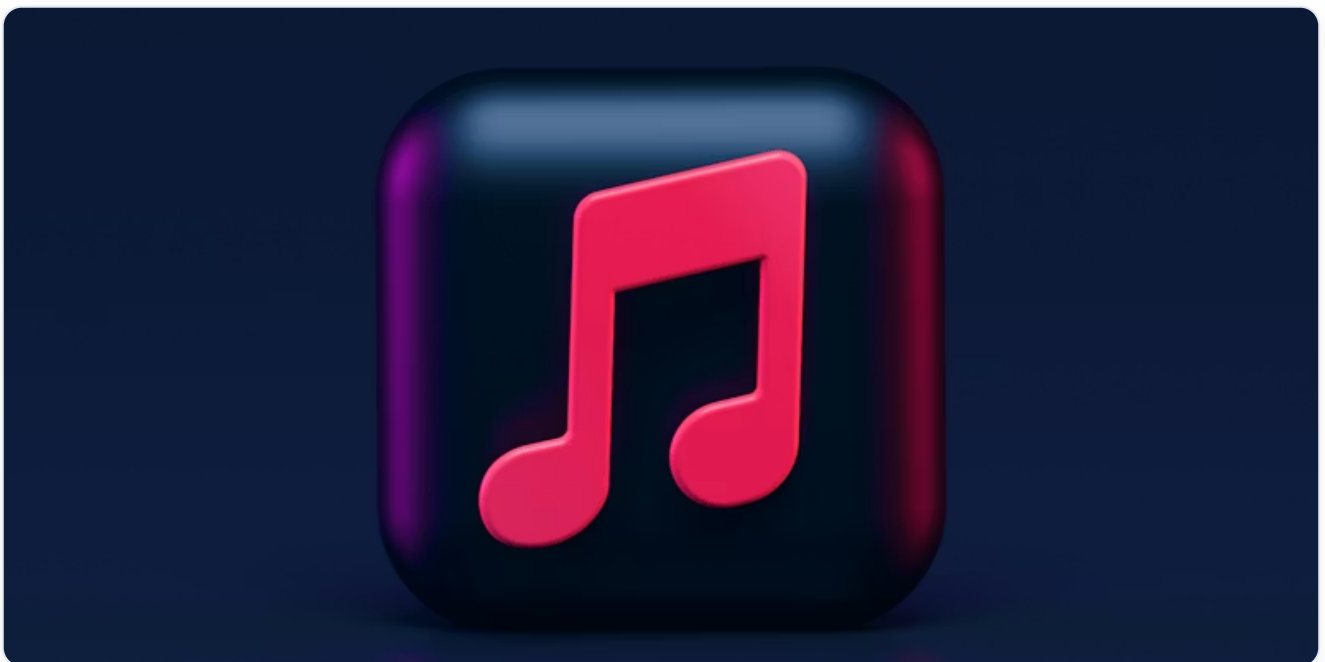


Fig 4.2: Risk Management - Stop Loss and Take Profit Placement

Risk Management Rules:

- Maximum 2% risk per trade
- Stop Loss ALWAYS in place
- Take Profit at least 1.5x Stop Loss
- Maximum 3 open trades at once

- Daily loss limit: 5% of account

5

Pro Tips & Next Steps



Fig 5.1: Performance Tracking and Analytics



Desktop Mastery

Multiple monitor setup recommended
Save workspace templates
Use hotkeys for efficiency



Community Power

Join Quantum Edge Discord
Share settings & results
Weekly Q&A sessions



Performance Tracking

Use MT4's Strategy Tester
Keep trading journal
Review weekly metrics

Essential Resources:

Support & Community: Email Support: support@quantumedge.us
Discord: [Link provided after signup] Documentation:
quantumedge.us/docs # Recommended Tools: Economic Calendar:
forexfactory.com Market News: investing.com Chart Analysis:
tradingview.com



Pricing & Subscription:

First 30 Days: FREE TRIAL - Full access

After Trial: \$30/month - Cancel anytime

Affiliate Program: Earn 15% recurring commissions

Updates: Free while subscribed



Musk Mindset: "Trade bold, but smart. Quantum Edge is your xAI for markets – it processes data so you can focus on strategy. The edge isn't in predicting the future, but in responding better to the present."